

Triops

NETmc Marine is the leader in the supply of digital video recorders to the ROV and Commercial Diving market for structural inspection and GVI work. Our Inspector and 73fifty DVRs have between them revolutionised the acquisition of video over the last 10 years. Building on this strength NETmc Marine has now developed a new DVR for the pipeline inspection market, the Triops,

The Triops is a 19" rack mountable, multi-channel video acquisition system developed specifically for the offshore pipeline inspection market. Unlike other multi-channel pipeline recorders the Triops does not depend on a single multi-channel board, rather each video channel has its own individual module, thus if one channel goes down it does not take down the whole system.

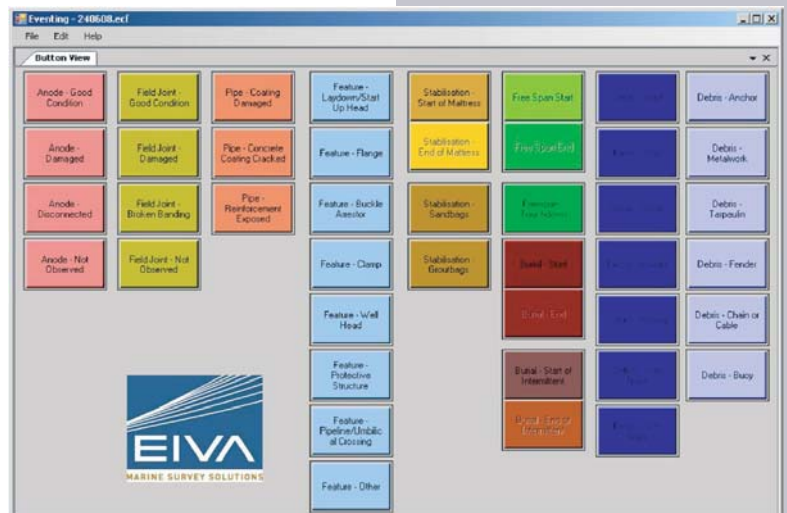
Each video file is stored as a separate entity though, by using NETmc Marine filters, media players know that there are associated files and so all three files will be launched simultaneously. Furthermore, as no special viewer is required the files can also be viewed in Windows Media Player™.

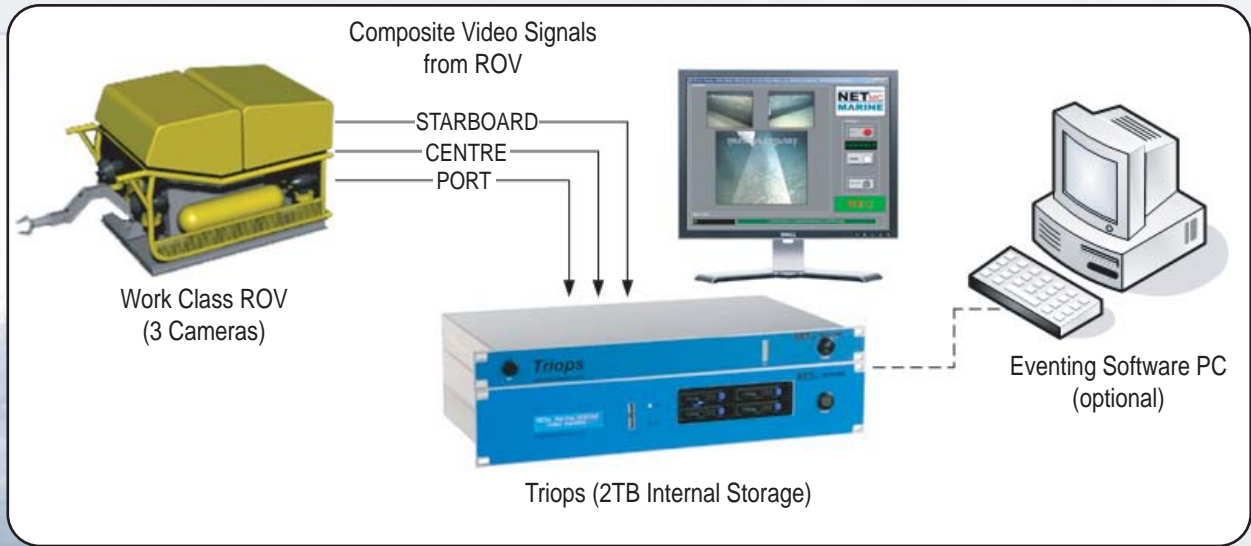
The Triops is supplied with an intuitive user interface that displays each of the three video streams in a live view; clicking on any of the live views expands that image to full screen. The Setup screen allows for manually configuring store paths and other configurable parameters.

NETmc Marine can supply filters and SDKs to enable eventing packages to interface to the Triops for associating video to events.



To enhance the operation of the system, NETmc Marine has partnered with EIVA A/S of Denmark, developers of Marine navigation software, to interface the Triops with EIVA's suite of software including their NaviEvent package. NaviEvent allows for both online and offline eventing of pipeline inspections, with video being associated by time, thus enabling a "jump to" video facility when used with the NETmc Marine Triops system.





Power Requirements	85 - 264 Vac, 50 - 60 Hz
Power Consumption	180w
Operation Temperature	10 - 35 Degrees
Storage Temperature	-10 - 60 Degrees
Dimensions	482mm(W) x 44mm(H) x 153mm(D) 1U 19" rack mount 482mm(W) x 88mm(H) x 255mm(D) 2U 19" rack mount
Video input	Composite (BNC) PAL / NTSC
Video Stream format	MPEG4
Video Rate	MPEG4 1-3 Mbps
Audio	Analog stereo line input
Microphone	Mono 1/4" Jack
Network Support	1 Gigabit
Internal hard drive	2 TB
External Connections	USB 2



Standard features / benefits include;

- Proven hardware reliability
- Specifically designed for the pipeline market
- Automatic file naming
- Simple interface to EIVA NaviEvent
- Record in raw MPEG4
- Single Microphone input records on each channel