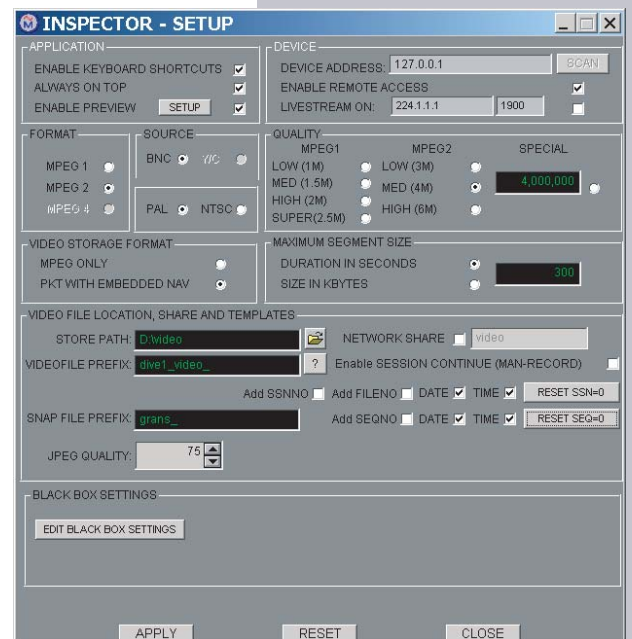
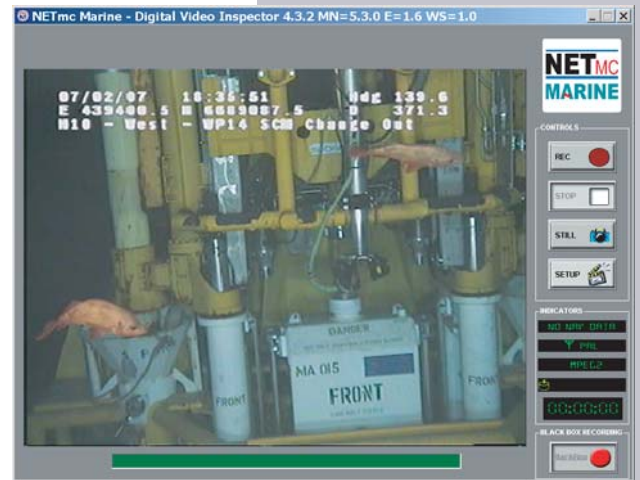


DVR Peli

The DVR Peli is an easy to use single channel ruggedised portable digital video recorder designed for use by the ROV, Commercial Diving and topside inspection markets. Packed full of advanced features, it is more than just a replacement for the VCR it introduces a new era in portable video acquisition, retrieval and file management. The ruggedised case is IP67 rated (when closed) and houses a 15" hi-resolution colour monitor. It records either PAL or NTSC, with audio, and supports a variety of MPEG formats and bit rates. The user interface is intuitive and uncluttered; configuring the recorder is a simple task requiring minimal, if any, operator training. Like the DVR Inspector

the DVR Peli can be controlled by third party software. By the integration of the DVR Peli with inspection software packages such as E-Inspect it is easy to attain the same quality of video inspection topside or down the leg of a platform as is expected of the DVR Inspector in underwater inspections. The DVR Peli has all the functionality of the DVR Inspector but with the added advantage of being housed in a ruggedised case, this enables it to be taken places that the DVR Inspector could not go e.g. down the leg of a platform or onto an open boat. The DVR Peli is ideal for small operations that require a compact ruggedised recorder.



Available options

- MPEG 1 or MPEG 2
- Built-in video overlay
- Black Box operation

The DVR peli is an all-in-one portable digital video recorder for open boat and remote site projects.

Typical Operating Layout



Standard Features include:

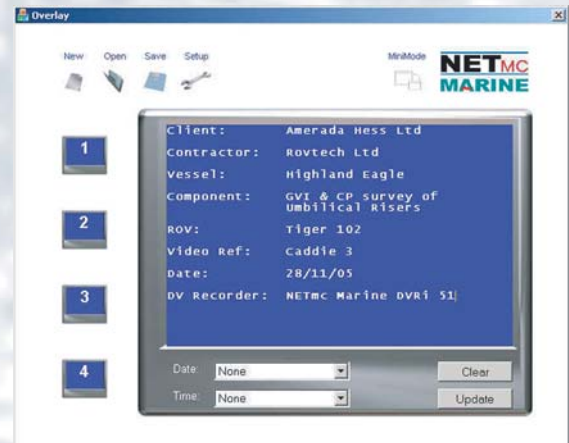
- Simple operation with Automatic file naming
- All files stored by time and date
- Record in raw MPEG or GIS ready format
- On-line capture of stills in Bitmap, JPEG or GIF
- Fully compatible with Coabis, Scope and E-Inspect
- High storage capacity
- GPS input
- Built in hi res 15" monitor
- Integrated keyboard and mouse
- Highflow cooling system
- Fully ruggedised construction



Power Requirerments	100 - 260 Vac, 50 - 60 Hz
Power Consumption	180w
Operation Temperature	10 - 35 Degrees
Storage Temperature	-10 - 60 Degrees
Dimensions	486mm(L) x 392mm(W) x 192mm(D) (Closed Peli Case)
Weight	5kg
Video input	Composite (BNC) /S-VHS (4-way mini din) PAL / NTSC
Video Stream format	MPEG1 / MPEG2 /via codec MPEG4
Video Rate	MPEG1 - 1 / 1.5 / 2 / 2.5 Mbps MPEG2 - 3 / 4 / 6
Audio	Analog sterio line input
Microphone	Mono 1/4" Jack
Screen size and resolution	15" LCD 1024 x 768
Network Support	10 /100 base T
Internal hard drive	140 GB
Serial Ports	9 way D-Type for serial navigation
External Conections	USB 2

DVR Peli Applications:

- Diver operations
- Micro ROV operations
- Environmental operations
- Drop camera recording
- Remote site
- Tank inspections
- Harbour inspections
- Shop floor operations



Overlay Manager GUI