

## DVRi HD

With a long track record in the integrity and inspection market, the DVR Inspector is now available for high definition (HD) recording.

Supporting 1080 and 720 input camera resolutions, the DVRi HD has a unique ability to record in both high definition and standard definition - and has integrated overlay for nav information and component ident.

On some jobs, it may not be essential to record all footage in hi-def, so routine footage can be recorded in standard, while anomaly clips and still images can be saved in hi-def. Alternatively, all video can be recording in hi-def, or all in std-def or a mixture of both.

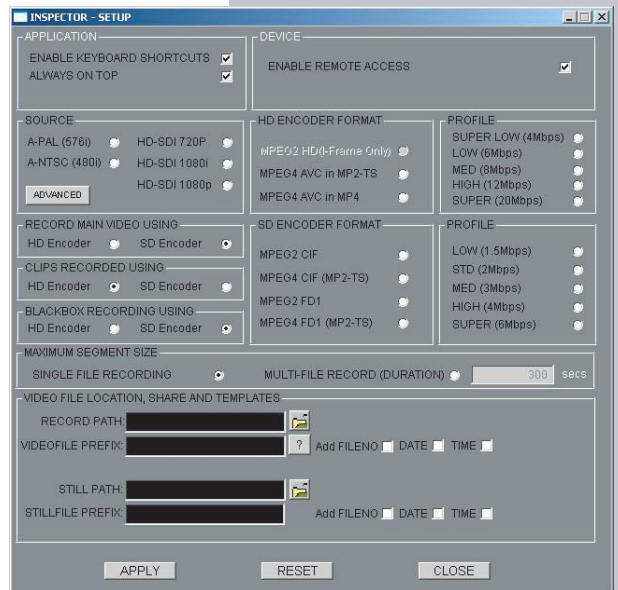
The DVRi HD has a SDI pass-through, so a downstream monitor can be used to display the source video with the overlay applied - ideal for observing / eventing. The system also has a downscaled composite output - allowing a standard-def version of the HD input to be displayed on a regular monitor or passed to a standard def recorder like our 73ifty used for black-box.



The integrated overlay offers internal text writing and graphical image placement functions. It also has 2 external serial ports for accepting remote overlay data from inspection software / CP system etc.

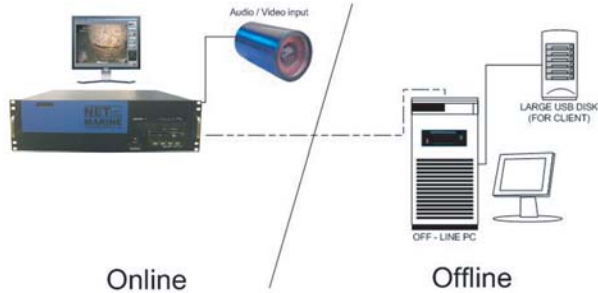
The user interface is intuitive and uncluttered with onscreen audio VU meters - configuring the recorder is a simple task requiring minimal operator intervention.

19" rackmount unit houses DVDrw drive and 1TB of secure RAID storage.

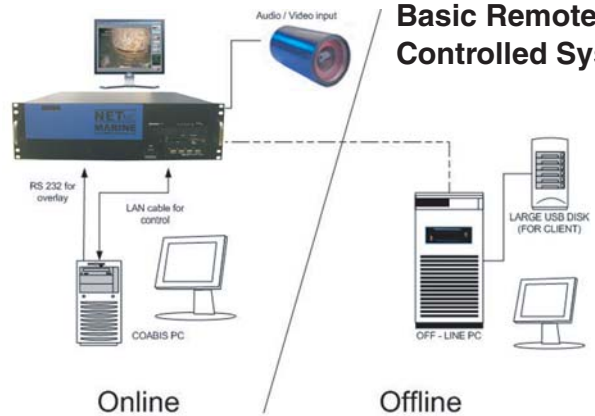


**The NEW high definition DVRi HD takes subsea inspection footage clarity to a new level.**

## Stand alone system



## Basic Remote Controlled System



### Standard Features include:

- Integrated hi-def overlay with serial inputs
- Records composite standard video or SDI hi-def
- Simple operation with automatic file naming - files stored by time and date
- From a high def input - able to record as standard def for routine (save space) and hi-def for anomalies
- Down scaled composite output for distribution / blackbox or viewing on regular monitor
- Fully compatible with Coabis, Scope, Netlink, Surespek and e-inspect
- High storage capacity with RAID security
- 19" rack mount
- On screen VU meters

Power Requirements	100 - 260 Vac, 50 - 60 Hz
Power Consumption	200w
Operation Temperature	10 - 35 Degrees
Storage Temperature	-10 - 60 Degrees
Dimensions	485(W) x 135(H) x 465 (D) (3U case)
Weight	10kg
Video input	pass through composite and SDI downscaled HD output via composite VGA / HDMI for control monitor
Video Recording format	HD mpeg 4 SD mpeg 4 or mpeg 2
Video Rate	SD 1.5mbps - 6mbps HD 4mbps - 20mbps
Audio	Analog stereo line input or commentary mic
Network Support	Gigabit
Internal storage	1TB Raid
Serial Ports	2x9 way D-Type for overlay string input



### Optional Features:

- Black box operation
- External NAS for mass storage
- Remote control via Network
- SDK for bespoke / integration

NETmc Marine Ltd  
 New Deer, Turriff, Aberdeenshire AB536TL SCOTLAND  
 tel: +44 (0) 1771 644001  
 fax: +44 (0) 1771 644005  
 www.NETmcMarine.co.uk  
 Sales@NETmcMarine.co.uk