

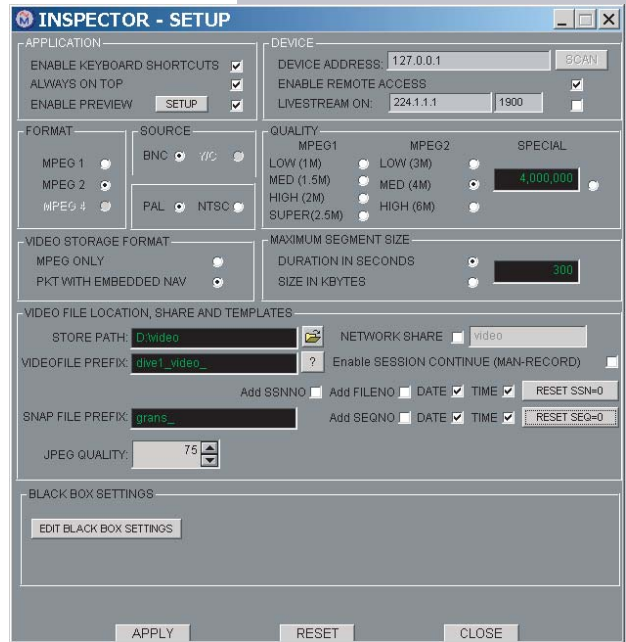
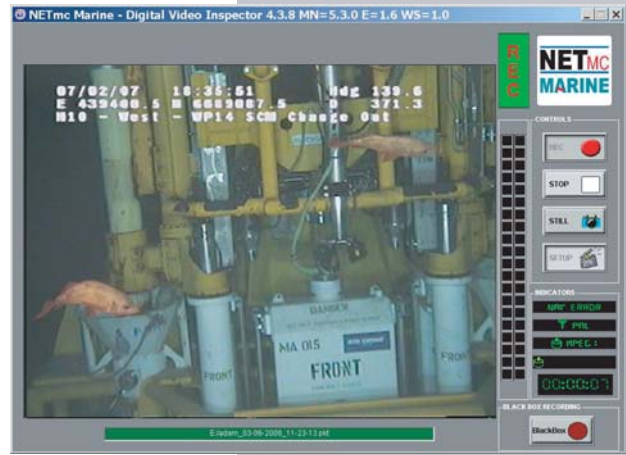
DVR Inspector

The DVR Inspector is the backbone of a family of digital video recorders designed for use by the ROV and Commercial Diving markets. Packed full of advanced features, it is more than just a replacement for the VCR it introduces a new era in video acquisition, retrieval and file management.

The 19" rack mountable unit records either PAL or NTSC, with audio, and supports a variety of MPEG formats and bit rates. Exchanging a VCR for a DVR Inspector takes but a couple of minutes as the connections on the DVR Inspector are exactly the same as those on a VCR. The user interface is intuitive and uncluttered and configuring the recorder is a simple task requiring minimal operator intervention.

However it is when the DVR Inspector is integrated with external software packages that the true power of the system becomes evident. The underwater structural inspection market has

been revolutionised by the integration of the DVR Inspector with inspection software packages such as SCOPE, E-Inspect and Aker Kvaerner's Coabis. In the past to record separate continuous video and anomalous clips, would have required two VCRs and the need to maintain a video log, now with the DVR Inspector these separate video files are recorded from one recorder and the video log is no longer required, as the software controls the naming and storage location of the files, thus enabling hyper links to be set up between the anomaly and the video. This makes video retrieval a simple matter of clicking on the anomaly, which locates the video file and plays it in Windows Media Player or from within your application. Whether on the vessel or in the office, you will have instant access to the data without the need of any specialist software or hardware.

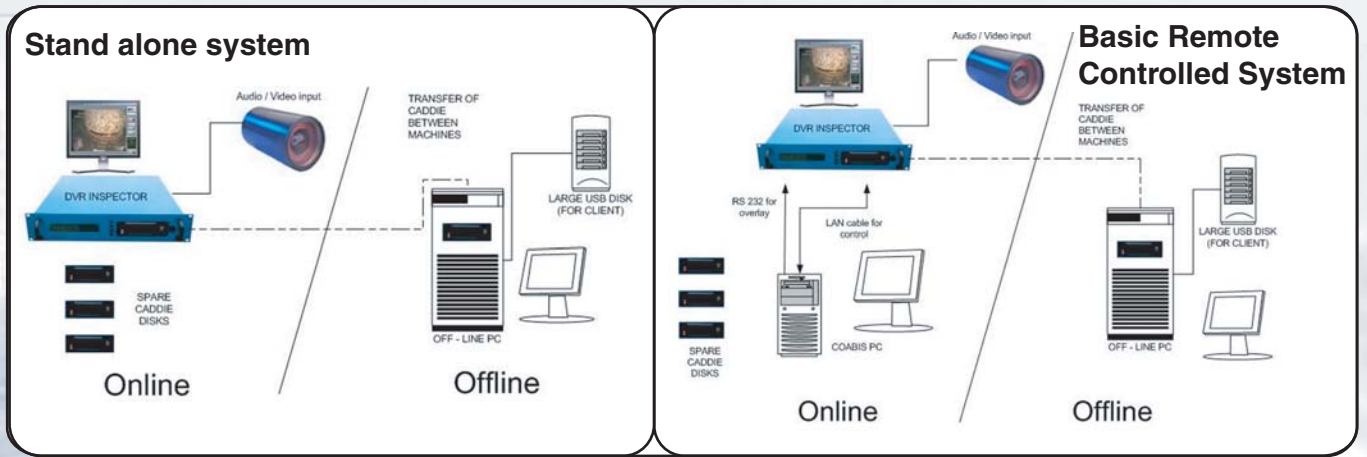


Available options

- MPEG 1 or MPEG 2
- Removable SATA drive caddie
- Built-in video overlay
- Black Box operation
- SDI input



With its proven track record the DVR Inspector is the industry standard replacement for the outmoded VCR.



Standard Features include:

- Simple operation with Automatic file naming
- All files stored by time and date
- Record in raw MPEG or GIS ready format
- On-line capture of stills in JPEG
- Fully compatible with Coabis, Scope,
- Netlink, Surespek and E-inspector.
- High storage capacity
- 19" rack mount
- NAV input
- Video pass through
- OS on flash drive
- Composite Video QC output



Power Requirements	100 - 260 Vac, 50 - 60 Hz
Power Consumption	180w
Operation Temperature	10 - 35 Degrees
Storage Temperature	-10 - 60 Degrees
Dimensions	482(W) x 88.5 (H) x 455 (D) (2U case)
Weight	15kg
Video input	Composite (BNC) /S-VHS (4-way mini din) PAL / NTSC
Video Stream format	MPEG1 / MPEG2 /via codec MPEG4
Video Rate	500 kbps - 6 Mbps
Audio	Analog stereo line input
Network Support	10 /100 base T
Internal storage	80GB
Serial Ports	9 way D-Type for serial navigation.

Optional Features:

- MPEG 2 Encoder
- Built-in video overlay with Overlay Manager
- Black box operation
- Can be integrated with a DVR Pro
- External NAS for mass storage
- Remote control via Network
- SDK for bespoke / integration



(featuring optional SATA removable drive)



Remote control



Overlay Manager GUI