

mediaFPC

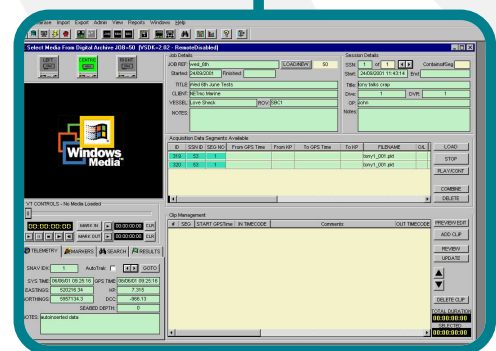
foot pedal controller



Remote operation of core review capabilities

Simple plug 'n' play connections to most professional VCR's and our very own digital asset management products

- Simple Control..
Microprocessor control allows simple foot operated control of all major video replay systems
- Functional..
Foot operated Fast Forward, Play, Pause and Rewind for ease of major funtions
- Built to last..
Robust cast alloy construction with anti-slip foot grip
- Configurable..
Selectable RS232 or RS422 (dongle supplied)
- Programmable..
Fully programmable operation, (when used with NETmc's mediaNET software)
- Adaptable..
9way serial interface allows connection to most VCR's



DRS console interface

As part of our on-going customer lead product development programme, we can now offer our latest addition the NETmc Marine Foot Pedal Controller.

With our market base being both offshore survey and the media industry, this product was originally developed for the latter in conjunction with our sister company. A typical example of the technology transferring between the 2 industries. Something which we at NETmc Marine pride ourselves on.

Initially developed for our very own range of digital asset management products, this product has now been adapted through customer demand to control a range of other established video products.

Control At Your Feet!

Powered from an external DC power supply, the Foot Pedal Controller is connected to the host equipment via a 9way serial cable. A selection of dongles are available, which allows you to tailor wiring and pedal output to suit your specific application.

The Foot Pedal Controllers are manufactured using cast alloy to withstand all the harshest of operators. They embody a microprocessor which can control the three independent pedals,

allowing rewind, pause/play and fast forward functions.

Utilising specific software, the foot pedals can control multiple professional VCR's using just one pedal arrangement.

Compatibility

The NETmc Marine Foot Pedal Controller is compatible with a wide range of existing video replay systems. Some of the supported products include:

Panasonic AG-7130	Medianet Digital Asset Family,
Panasonic AG-7150	MediaVT - E2P
Panasonic AG-7330	MediaVT - P
Panasonic AG-7350	MediaVT - PX
Panasonic AG-7355	MediaVT - E1XP
Panasonic AG-7750	MediaVT - E1PS
Panasonic AU-65	MediaVT - E1P
JVC BR-D85U Digital-S	
JVC BR-D750U Digital-S	
JVC BRS 525 S-VHS	
JVC BRS 822 S-VHS	
JVC BR-S822U	
Sony UVW 1400 Beta-SP	
Sony UVW 1800 Beta-SP	
Sony BVU 850 3/4 SP	
Sony BVW 10 Beta-SP	
Sony BVW 40 Beta-SP	
Sony BVW 50 Beta-SP	
Sony BVW 65 Beta-SP	
Sony BVW 70 Beta-SP	
Sony BVW 75 Beta-SP	
Sony VO 9800 3/4	
Sony VO 9850 3/4	
Sony BVW 2800 BetaSP	
Sony PVW-2800	
Hitachi VLS 100 S-VHS	
Panasonic AG-D550 S-VHS	
Panasonic AV63 MII	
Panasonic AJD750 DVC Pro	
Pioneer VDR-1000A	

Weight	1 kg
Size	300mm x 105mm x 33mm
Power Requirements	6 -> 30V ac (polarity protected)
Power Consumption	4 Watts
Operating Temperature	5 to 40 degrees C
Data Output	Serial Digital
Data Signal Control	Dongle Selectable RS232 or RS422 Rewind (left pedal) Play / pause (middle pedal) Fast forward (right pedal) When utilised in a PC environment, e.g. using mediaNET. The Foot Pedal Controllers are fully programmable to allow for the users to customise the functionality of the three pedal arrangement.
Material Colour	Robust cast alloy Grey with black anti-slip foot pads (custom colours available)
Additional Features	When utilised in a PC environment, e.g. using mediaNET. The Foot Pedal Controllers are fully programmable to allow for the users to customise the functionality of the three pedal arrangement.

NETmc Marine Ltd

Dunann Cottage, Turfhill
Cuminstown Road, New Deer
Aberdeenshire. AB53 6TL
SCOTLAND

tel: +44 (0)1771 644001
fax: +44 (0) 1771 644005
www.NETmcMarine.co.uk
Enquiries@NETmcMarine.co.uk