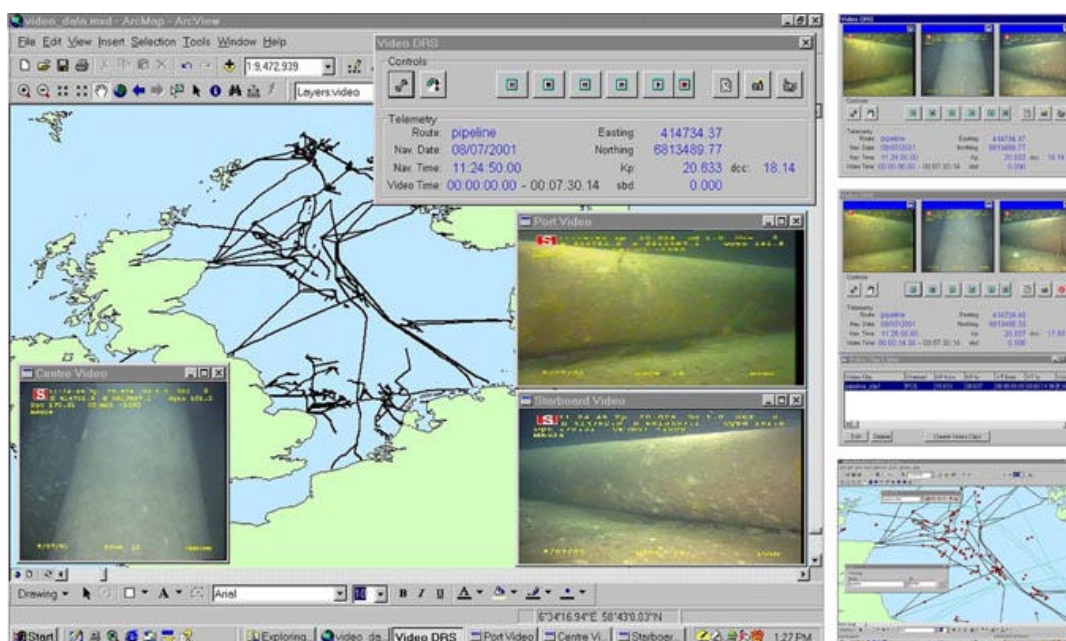


# video DRS for ArcView



View triple channel synchronised video footage from within ArcView. Elements of NETmc Marine's Digital Review Suite (DRS) have been integrated with ESRI Inc. ArcView Geographical Information System (GIS) to create an ArcView extension - Video DRS. Video DRS provides a powerful and convenient way of viewing all survey data together on the same Windows Desktop!

VIDEO DRS empowers many users to access vast archives of survey data by calling upon network shared mediaSERVERs and mediaSTORE devices - which can find, retrieve and deliver high resolution video and graphical data directly onto the user's PC on demand. Providing a single access point to all your survey information with enhanced reporting and analysis capabilities.



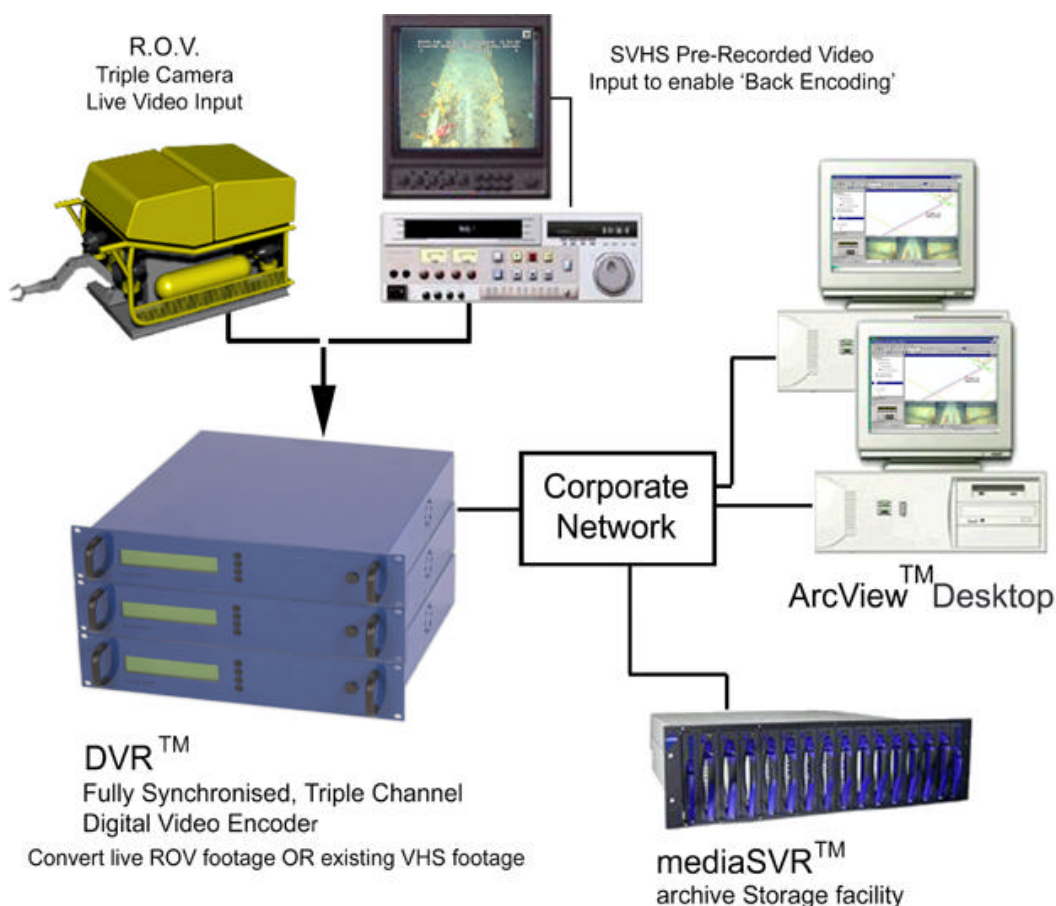
Typical Screenshots

- Increased reporting efficiency
- Improved quality of reporting
- Simplified analysis
- Direct access to video footage
- Visually cross reference data for QC / QA
- Create stills or video clips
- Search for video by co-ordinates, time or KP
- Direct correlation of video to many other survey datasets - SSS mosiacs, Bathymetry, Profile Scans, Historical data, etc.
- Create ArcView GeoDatabases direct from video footage

ArcView is the leading desktop GIS product from ESRI inc. - providing geographical data visualisation, query and analysis capabilities, along with the ability to manage and edit geographical data. ArcView is part of the ArcGIS family of products that form a complete geographical information system built on industry standards. ArcView can be customised, or provided with extra functionality by adding additional modules (extensions) onto the core product.

NETmc Marine's digital video and asset management technology - already proven in the media and multi-media industries, is fast becoming the defacto standard for digital video recording and storage for the off-shore sector. The non-dependant, modular data structure allows any video format to be used within the system - whether it be AVI, MPEG 1, 2,4,7 - or indeed systems yet to be commercially available. This ensures future compatibility as well as maintaining integrity with existing archives.

### Corporate System Example:



#### NETmc Marine Ltd

Dunann Cottage, Turfhill  
 Cuminstown Road, New Deer  
 Aberdeenshire, AB53 6TL  
 SCOTLAND

tel: +44 (0) 1771 644001  
 fax: +44 (0) 1771 644005  
 www.NETmcMarine.co.uk  
 Enquiries@NETmcMarine.co.uk

#### MAPIX Technologies Ltd

32 Dudley Gardens  
 Edinburgh  
 EH6 4PT  
 SCOTLAND

tel: +44 (0) 131 5548073  
 fax: +44 (0) 131 5548073  
 info@mapix.com  
 www.mapix.com